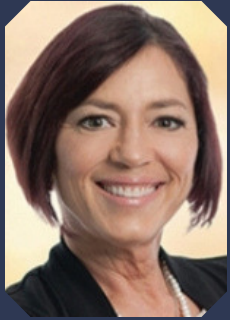


Meet the Instructors



Karen Wuertz
DDS, ABCDSM, ABLs, FOM

Dr. Karen Wuertz is a Diplomate of the American Board of Craniofacial Dental Sleep Medicine, a Diplomate of the American Board of Laser Surgery and a Fellow in the American Academy of

Craniofacial Pain. Dr. Wuertz is passionate about treating and coordinating care for patients as it relates to oral restrictions, oral function, and airway management during Sleep.



Jenifer Chiappetta Midili
MA, CCC-SLP, COM

Jenifer Midili has over 20 years of experience working with children and families. She owns Children's Speech and Language Services, Inc. in Falls Church, VA. Jenifer has extensive

training in the area of feeding. She is Certified Orofacial Myologist through the International Association of Orofacial Myology. In addition, she is PROMPT® Certified. She is certified by the American Speech-Language-Hearing Association (ASHA) and is licensed to practice speech therapy in the state of Virginia.



Brooke Pettus
RdH, Myofunctional Therapist

She completed her initial training through the Academy of Orofacial Myofunctional Therapy (AOMT) and MyoMentor, then took part in an online mentorship program. She attended symposium

training through the International Association of Orofacial Myology (IAOM), and plans to start their training program and certification track this year.



Ayden Cox
Licensed Massage & Bodywork
Therapist

licensed massage therapist specializing in prenatal and postpartum bodywork along with infant, prenatal, postpartum and fertility craniosacral therapy.

Tethered Oral Tissues (TOTS)

A Collaborative Approach to Diagnosis and Treatment

2 Day, Hands-On Course
14 CE Hours

Saturday & Sunday November 10 - 11, 2018
8:00 AM - 4:00 PM

4920 Niagara Rd, Ste 306 College Park, MD
(near Washington, DC)

Introduction

Ankyloglossia and Tethered Oral Tissues (TOTs) are best identified, diagnosed and treated by a multidisciplinary team of providers. This course will explore the important role of this team in facial development necessary for proper growth & development, feeding, and speech.

Clinical Curriculum

- Demonstrate a wide range of didactic and clinical tools in the assessment & treatment of TOTS
- Learn how to identify barriers and contributing factors that interfere with speech development and Orofacial myology therapy in ankyloglossia, oral habits, & airway
- Recognize when to refer to other professionals
- Understand the importance of developing a multidisciplinary team

Agenda

Day One

- 1 hour Introduction
- 3 hours Clinical case presentation (TOTS)
LUNCH
- 3 hours Didactic & clinical material (Speech)

Day Two

- 2 hours TOTS laser surgery cases
- 2 hours Orofacial myofunctional therapy
LUNCH
- 1 hour Orofacial myofunctional therapy (continued)
- 1.5 hours Multidisciplinary Approach putting all together case studies
- 0.5 hours Panel Discussion Q&As



Tuition

SMDS Dentists: \$695
Non-Member Dentists: \$795
Residents: \$450
Staff/IBCLC/OMT/SLP: \$400

Registration

Call: (301) 345-4196
Email: valerie@smdsdentists.org